

FROCA

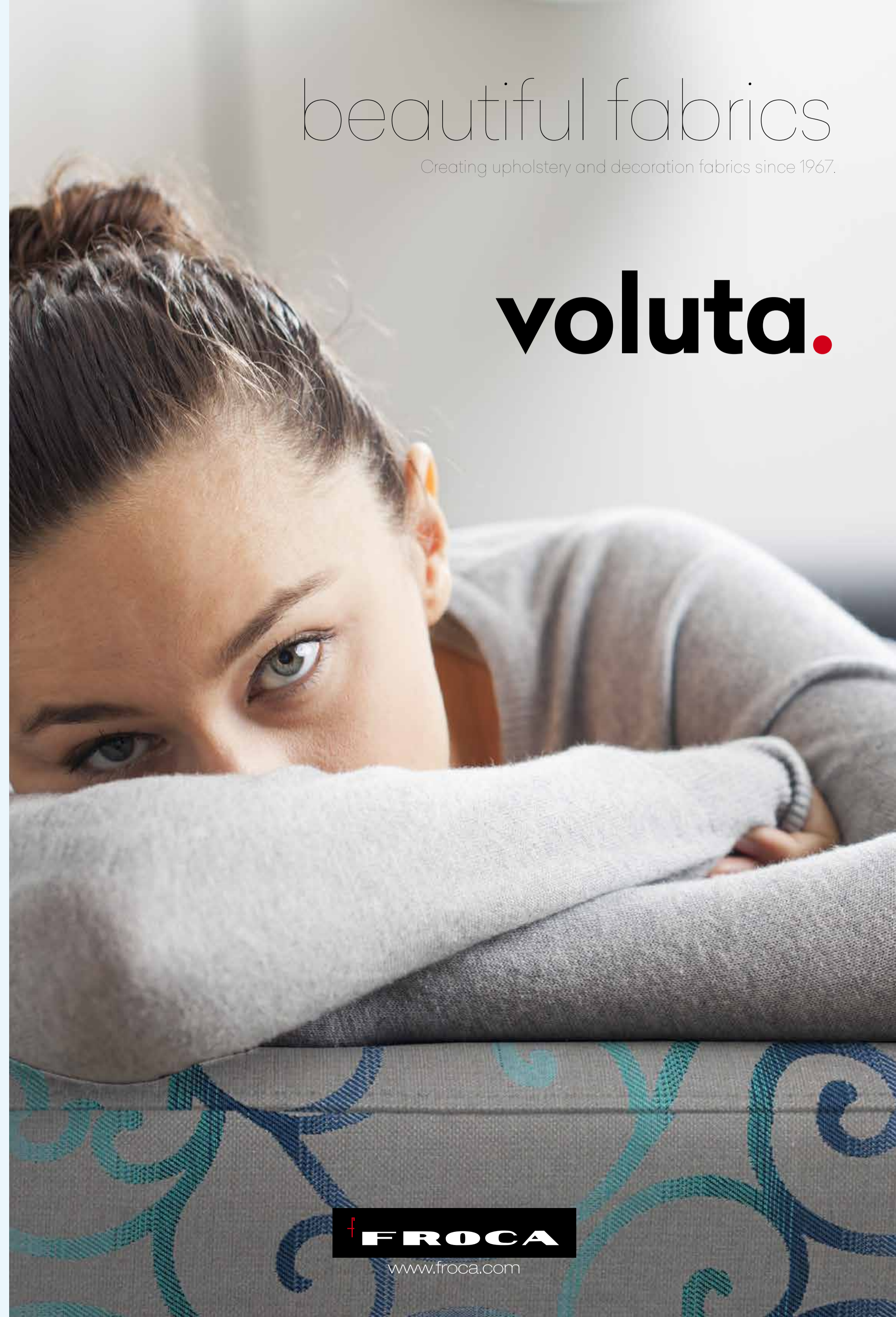
voluta.

FROCA





FROCA
www.froca.com



beautiful fabrics

Creating upholstery and decoration fabrics since 1967.

voluta.

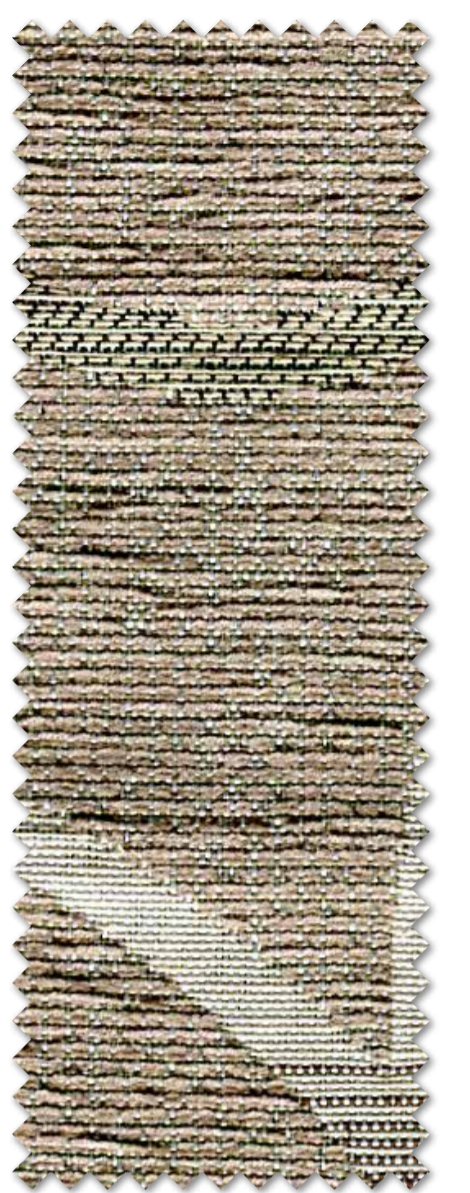
FROCA
www.froca.com



I love mixing classic and modern styles!



ROSETON 01



VOLUTA 1



www.froca.com



ROSETON 2



BULOVA 7



TEXAS 4



TEXAS 5



VOLUTA 2



TEXAS 7



PAPILLON 2



BULOVA 8



PINEDA 2



PAPILLON 1



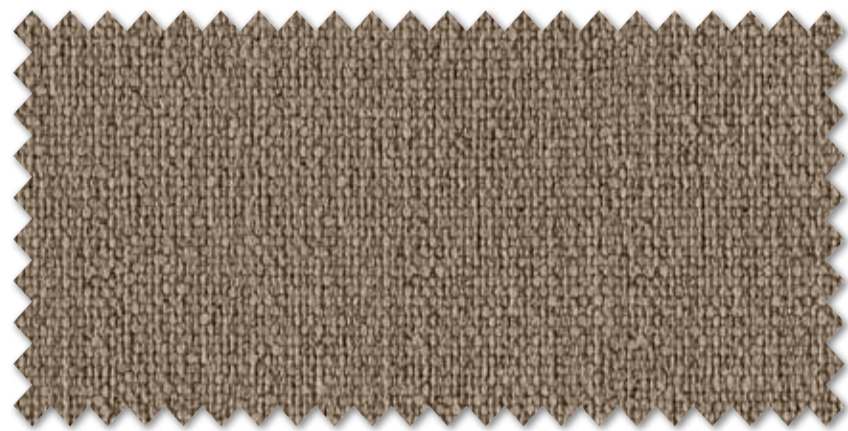
www.froca.com



ROSETON 3



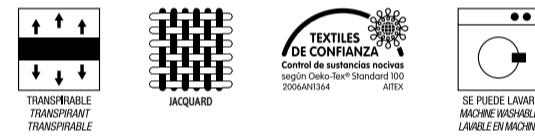
TEXAS 5



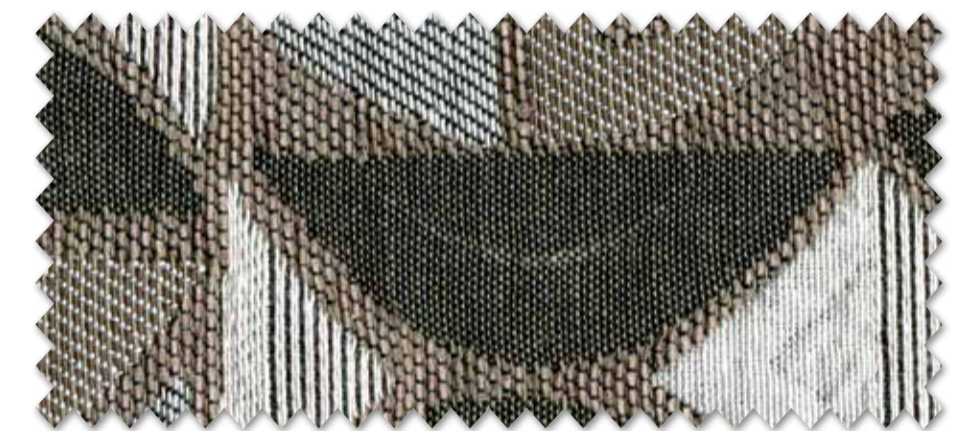
BULOVA 9



BULOVA 10



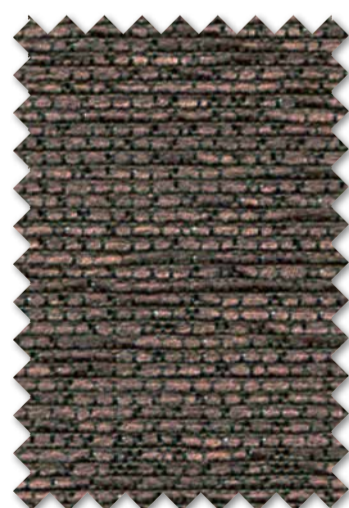
www.froca.com



RIDER 11



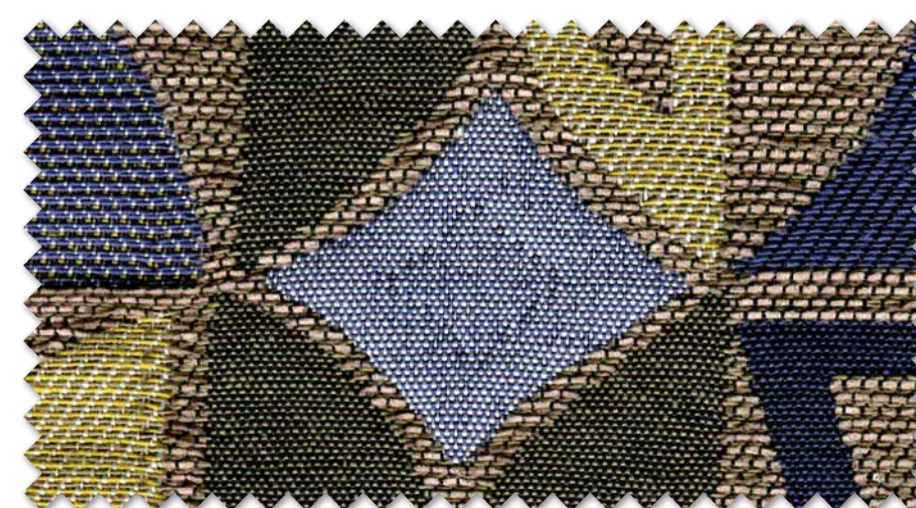
PAPILLON 3



PINEDA 4



TEXAS 9



RIDER 4



TEXAS 7



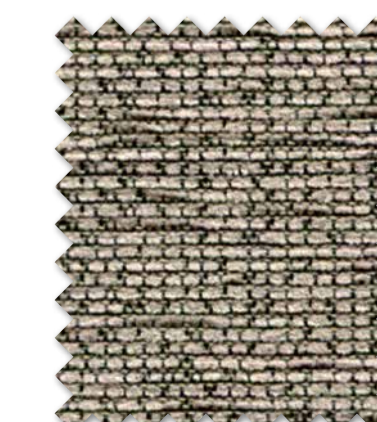
TEXAS 6



www.froca.com



BULOVA 17



PINEDA 3



PINEDA 10



TEXAS 9



PAPILLON 4



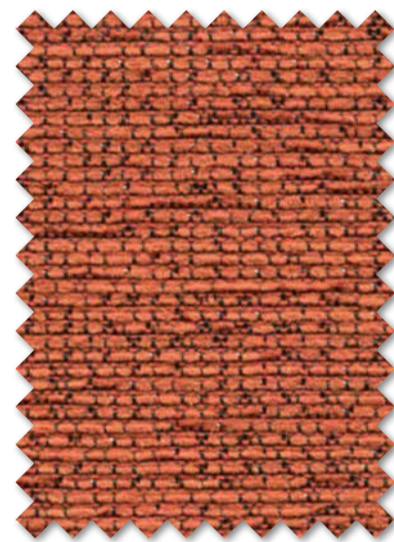
BULOVA 10



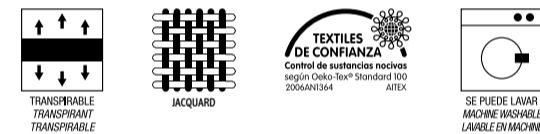
TEXAS 14



BULOVA 11



PINEDA 7

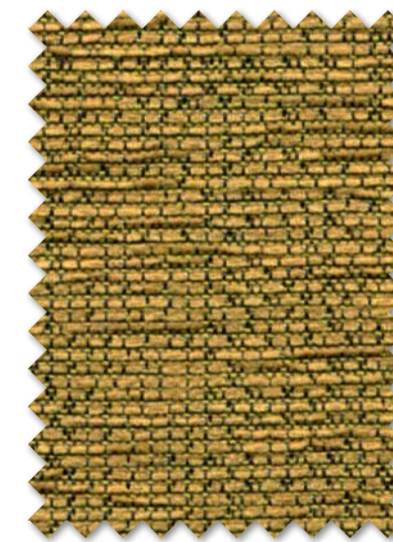


www.froca.com

My favorite sofa looks much better!



TEXAS 10



PINEDA 5



VOLUTA 3

Good day sunshine !



ROSETON 4



RIDER 1



www.froca.com



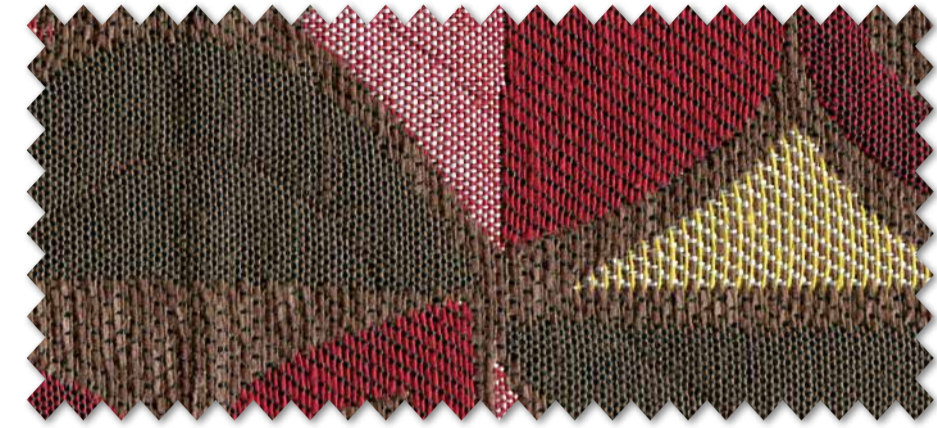
Feel the style



TEXAS 7



PAPILLON 5



RIDER 2



BULOVA 7



www.froca.com



VOLUTA 6



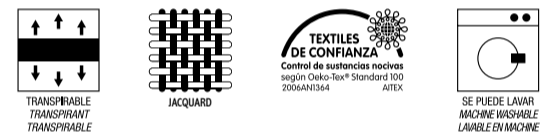
VOLUTA 4



PAPILLON 6



PINEDA 1



www.froca.com



BULOVA 14



BULOVA 9



VOLUTA 5



PINEDA 6



ROSETON 5



Blue helps me to relax after work...



VOLUTA 7



VOLUTA 8



www.froca.com



PAPILLON 10



BULOVA 13



ROSETON 6



ROSETON 7



PINEDA 1



PAPILLON 8



TEXAS 3



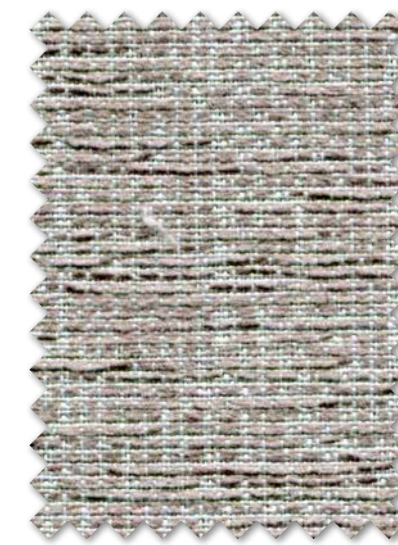
BULOVA 12



BULOVA 4



PINEDA 10



PINEDA 12



www.froca.com



VOLUTA 9



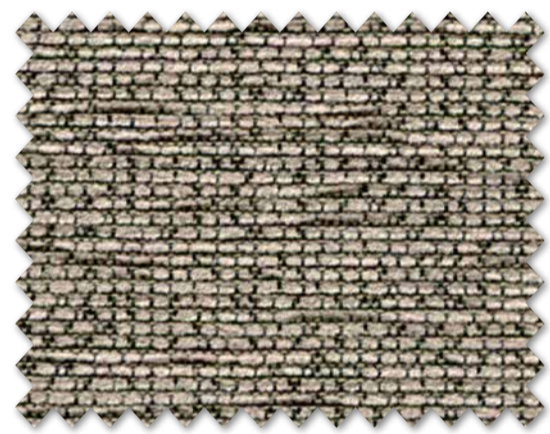
RIDER 5



Let the garden come into the house



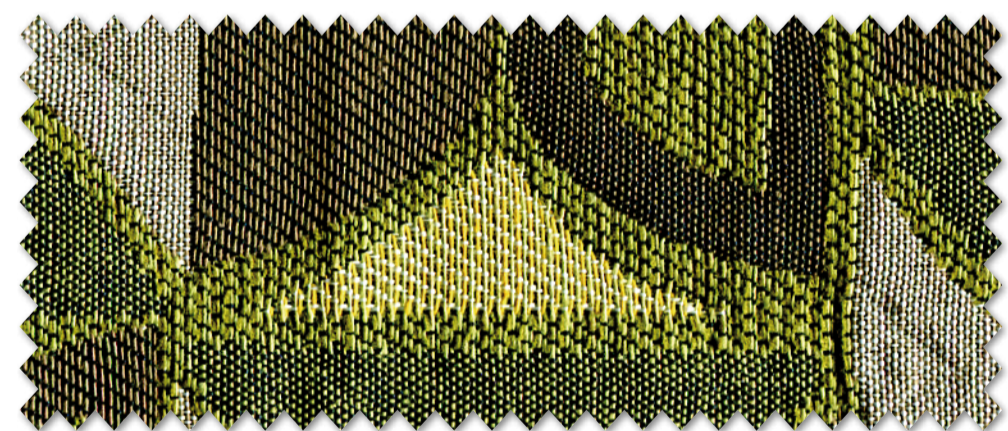
PAPILLON 9



PINEDA 3



BULOVA 18



RIDER 6



BULOVA 7



ROSETON 8



BULOVA 8



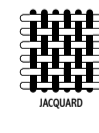
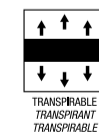
PINEDA 8



TEXAS 15



TEXAS 6





Make your furniture become exclusive!



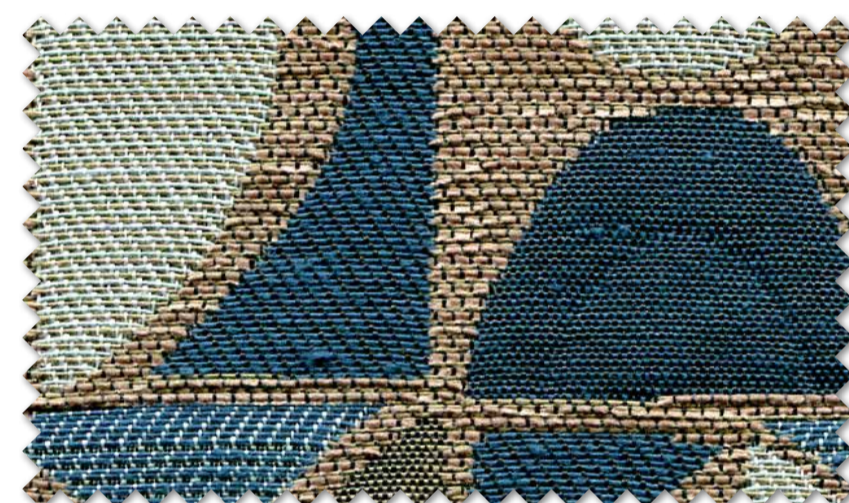
www.froca.com



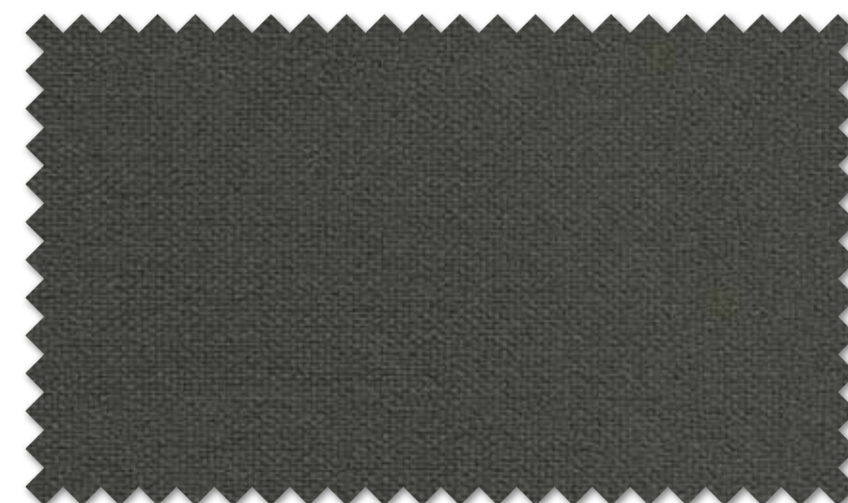
PAPILLON 11



RIDER 8



RIDER 7



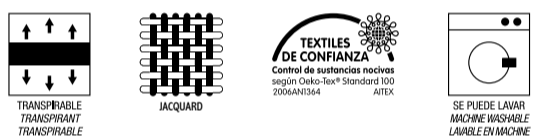
BULOVA 2



TEXAS 14



TEXAS 13



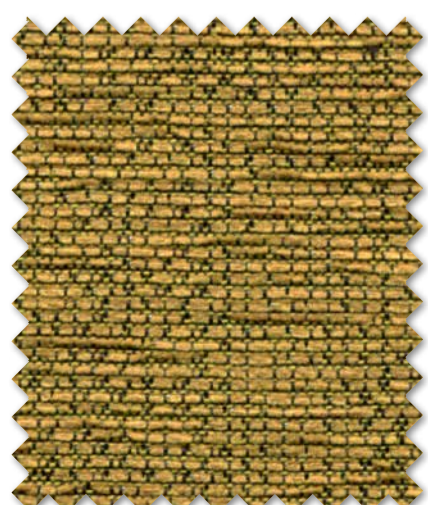
www.froca.com



ROSETON 9



PINEDA 9



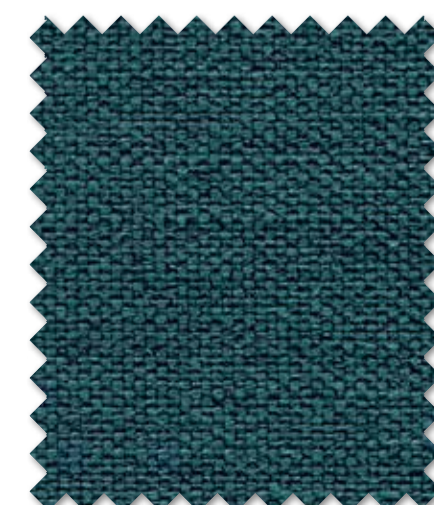
PINEDA 5



VOLUTA 10



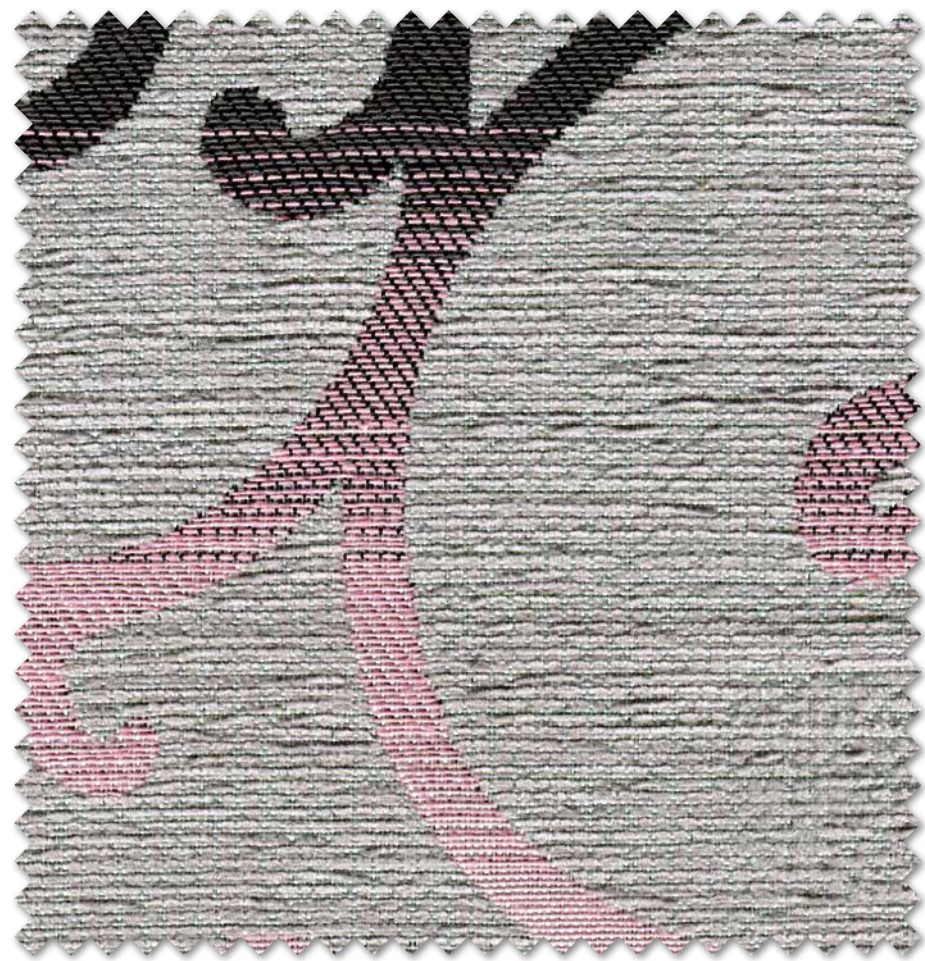
BULOVA 11



BULOVA 15



Making my furniture unique...



VOLUTA 11



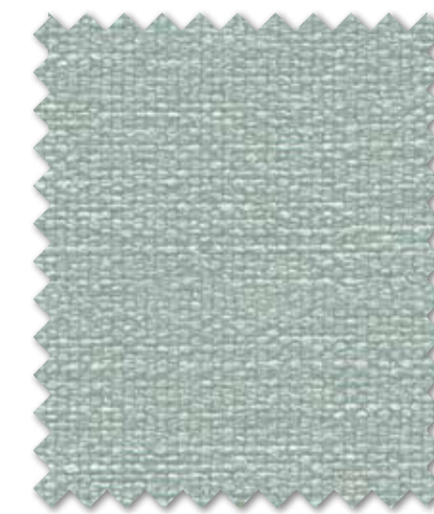
ROSETON 10



www.froca.com



BULOVA 5



BULOVA 16



PAPILLON 7



PINEDA 11



BULOVA 4



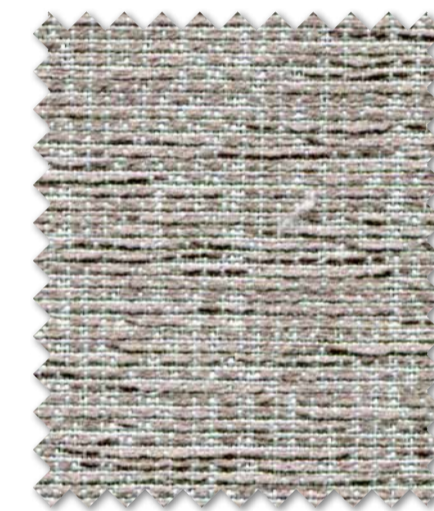
TEXAS 11



TEXAS 3



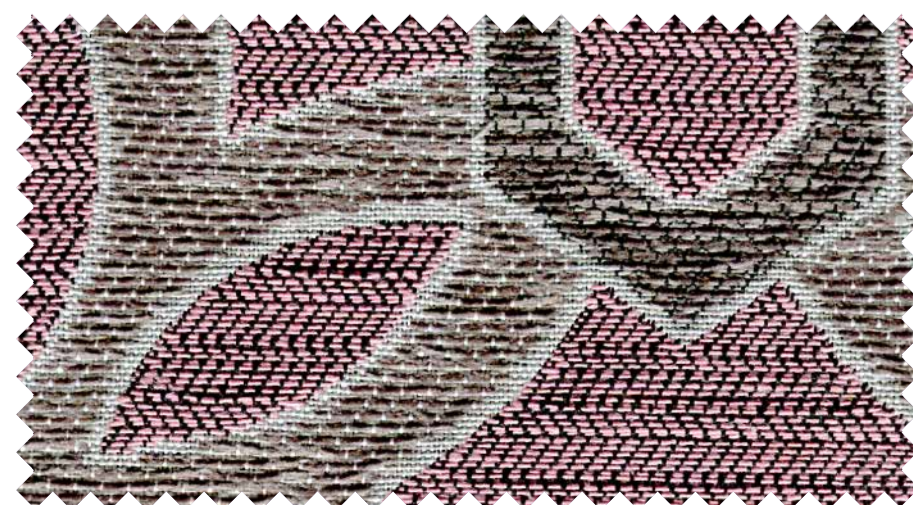
TEXAS 2



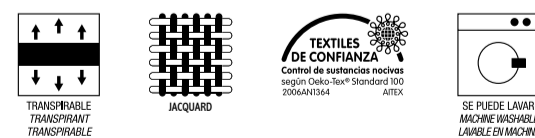
PINEDA 12



RIDER 9



ROSETON 11

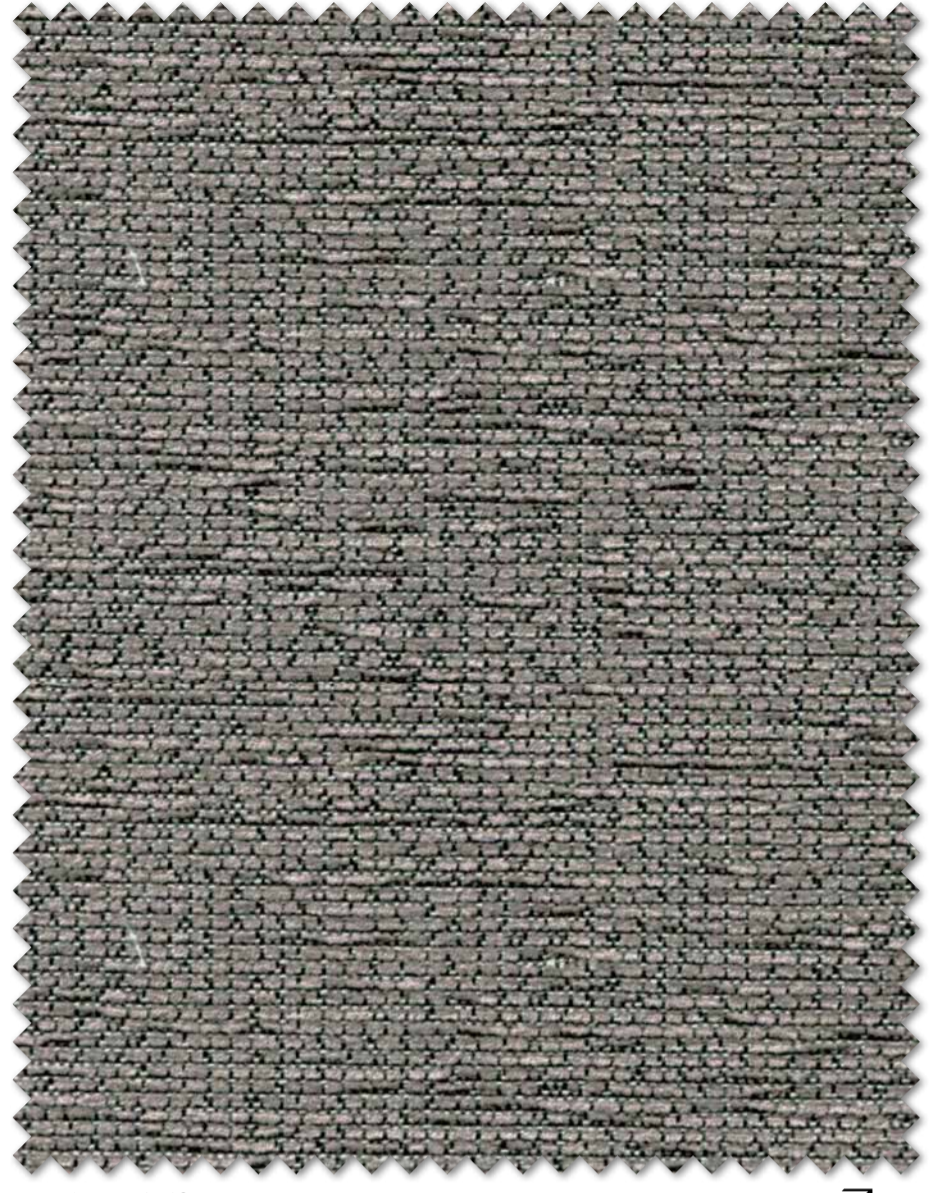


www.froca.com





www.froca.com



PINEDA 13



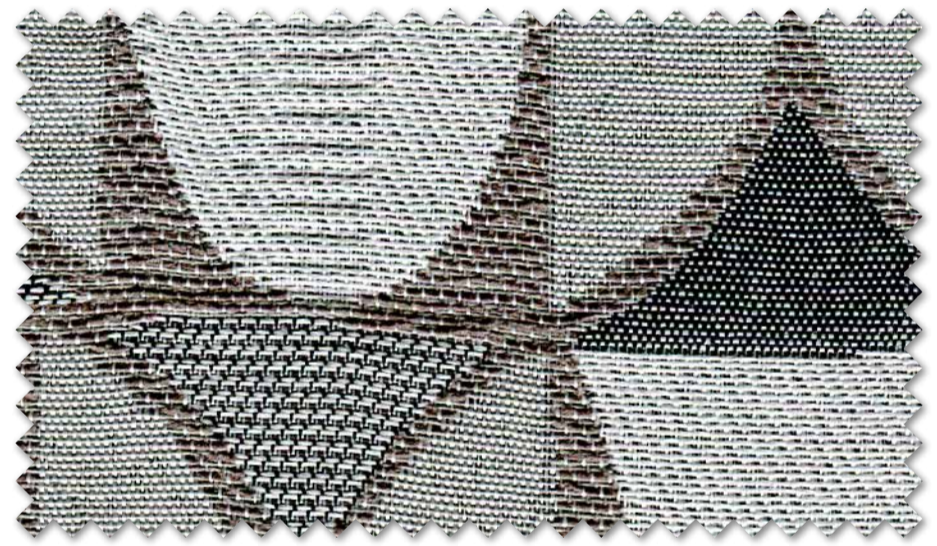
BULOVA 4



PINEDA 15



TEXAS1



RIDER 10



BULOVA 6



PAPILLON 12

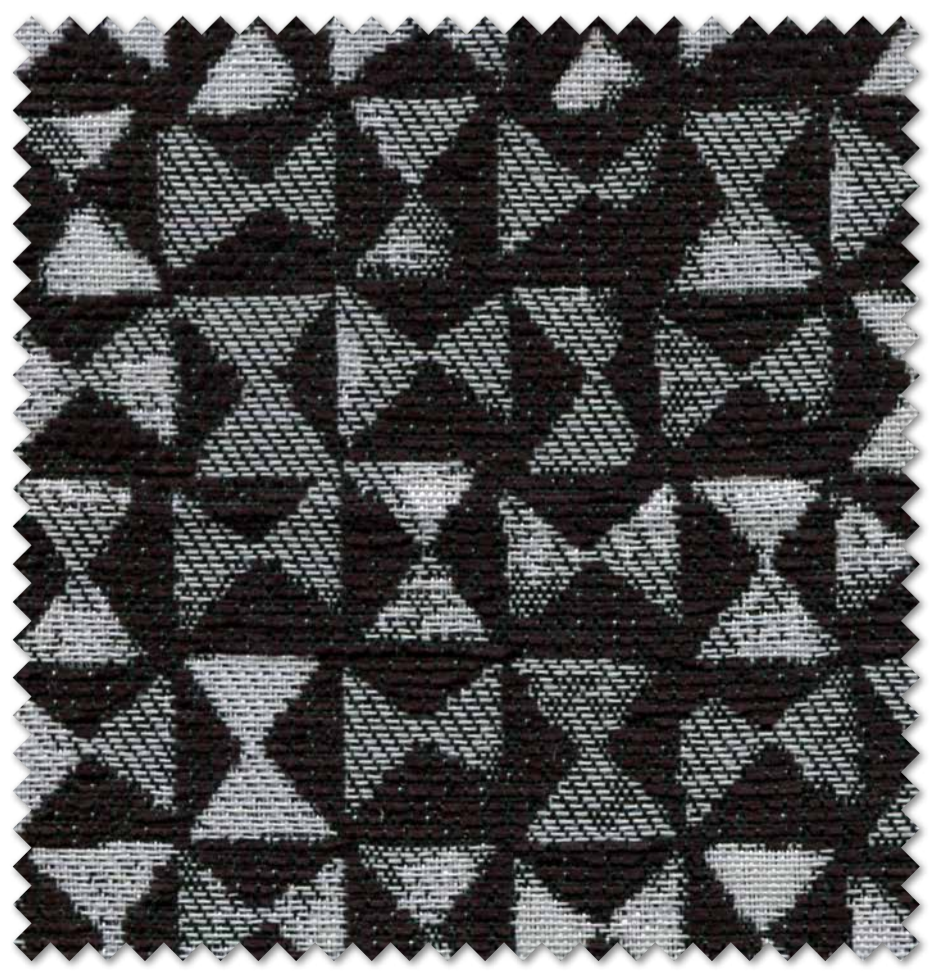


TEXAS 11



VOLUTA 12

Using grey is impossible to fail



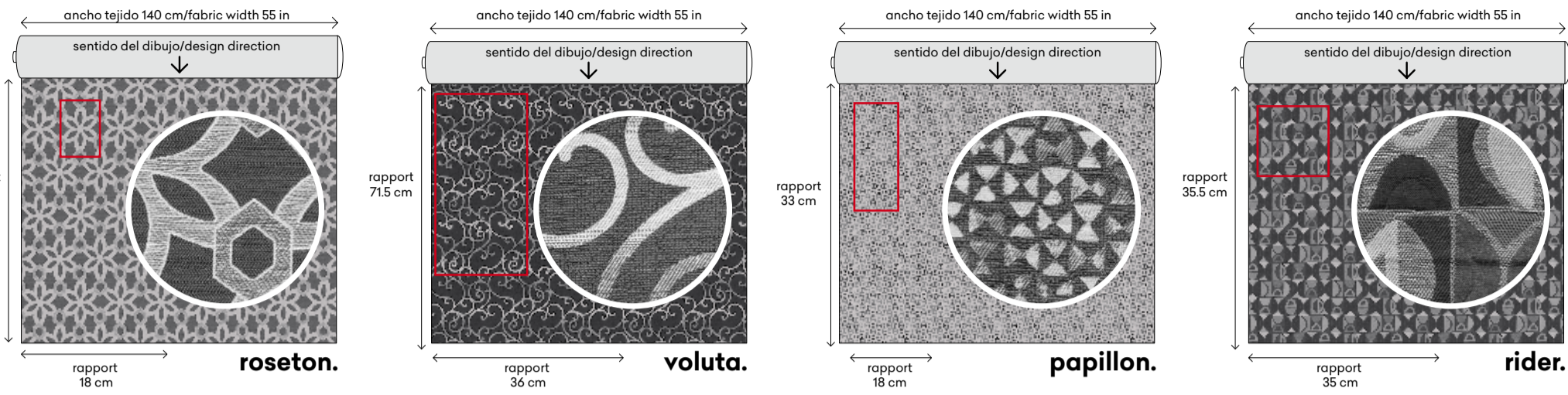
PAPILLON 13



ROSETON 12

especificaciones técnicas.

technical specifications · spécifications techniques



bulova.

COMPOSICIÓN Composition / Composition	100% Poliéster Polyester Polyester	
ANCHO Width / Largeur	140 cm - 54 in.	
PESO Weight / Poids	450 gr/m2 - 630 gr/ml	
RESISTENCIA AL RASGADO Tear strength / Résistance à la déchirure	Urdimbre Warp Châine 63 N Trama Weft Trame 63 N	ISO 13937 - 3 - Cat: A-B
RESISTENCIA DE LAS COSTURAS Seam strength / Résistance des coutures	Urdimbre Warp Châine 6 mm Trama Weft Trame 6 mm	ISO 13936 - 2 - Cat: A
RESISTENCIA A LA ABRASIÓN Abrasion resistance / Résistance à l'abrasion	> 35.000 Ciclos Cycles Cycles	ISO 12947 - 2 - 1998
SOLIDEZ DE LOS COLORES A LA LUZ Colour fastness to light / Résistance à la lumière	4-5	ISO 105 X12 ISO 12945-2
SOLIDEZ A LA LIMPIEZA EN SECO Rubbing solvents / Résistance au nettoyage à sec	4-5	ISO 105 X12 ISO 12945-2
SOLIDEZ DE LOS COLORES AL LAVADO Rubbing fastness in humid state / Résistance au nettoyage	4-5	ISO 105 X12 ISO 12945-2
RESISTENCIA AL PILLING Pilling resistance / Résistance au pilling	4-5	ISO 105 X12 ISO 12945-2
INSTRUCCIONES DE LAVADO Washing instructions / instructions de lavage		

texas.

COMPOSICIÓN Composition / Composition	55% PES. - 40% PU. - 5% ALG.	
ANCHO Width / Largeur	140 cm - 54 in.	
PESO Weight / Poids	650 gr/m2 - 910 gr/ml	
RESISTENCIA AL RASGADO Tear strength / Résistance à la déchirure	Urdimbre Warp Châine 54,6 N Trama Weft Trame 46,7 N	ISO 13937 - 3 - Cat: A-B
RESISTENCIA DE LAS COSTURAS Seam strength / Résistance des coutures	Urdimbre Warp Châine 3,1 mm Trama Weft Trame 3,1 mm	EN ISO 13937-3 EN ISO 13937-3
RESISTENCIA A LA ABRASIÓN Abrasion resistance / Résistance à l'abrasion	> 60.000 Ciclos Cycles Cycles	EN ISO 12947-1 / -2
SOLIDEZ DE LOS COLORES A LA LUZ Colour fastness to light / Résistance à la lumière	4-5	EN ISO 105-B 02
SOLIDEZ A LA LIMPIEZA EN SECO Rubbing solvents / Résistance au nettoyage à sec	4-5	EN ISO 105-X 12
SOLIDEZ DE LOS COLORES AL LAVADO Rubbing fastness in humid state / Résistance au nettoyage	4-5	EN ISO 105-X 12
RESISTENCIA AL PILLING Pilling resistance / Résistance au pilling	4-5	EN ISO 12945-2
INSTRUCCIONES DE LAVADO Washing instructions / instructions de lavage		

papillon. roseton. voluta.

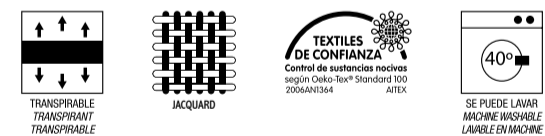
COMPOSICIÓN Composition / Composition	55% Algodón Cotton Coton 45% Poliéster Polyester Polyester	
ANCHO Width / Largeur	140 cm - 54 in.	
PESO Weight / Poids	450 gr/m2 - 630 gr/ml	
RESISTENCIA DE LAS COSTURAS Seam strength / Résistance des coutures	Urdimbre Warp Châine 3 mm Trama Weft Trame 2,8 mm	BS 3320:1988 BS 2543:1995
RESISTENCIA A LA ABRASIÓN Abrasion resistance / Résistance à l'abrasion	> 26.000 Ciclos Cycles Cycles	BS 5490 BS 2543:1995
SOLIDEZ DE LOS COLORES A LA LUZ Colour fastness to light / Résistance à la lumière	5	UNE 40187 BS 1006-B02
SOLIDEZ A LA LIMPIEZA EN SECO Rubbing solvents / Résistance au nettoyage à sec	4-5	ISO 105-D01 UNE 40099
SOLIDEZ DE LOS COLORES AL LAVADO Rubbing fastness in humid state / Résistance au nettoyage	4-5	ISO 105-C06 UNE 40029
RESISTENCIA AL PILLING Pilling resistance / Résistance au pilling	5	ISO/DIS 12945-2
INSTRUCCIONES DE LAVADO Washing instructions / instructions de lavage		

rider.

COMPOSICIÓN Composition / Composition	60% Algodón Cotton Coton 40% Poliéster Polyester Polyester	
ANCHO Width / Largeur	140 cm - 54 in.	
PESO Weight / Poids	500 gr/m2 - 700 gr/ml	
RESISTENCIA DE LAS COSTURAS Seam strength / Résistance des coutures	Urdimbre Warp Châine 3 mm Trama Weft Trame 2,8 mm	BS 3320:1988 BS 2543:1995
RESISTENCIA A LA ABRASIÓN Abrasion resistance / Résistance à l'abrasion	> 26.000 Ciclos Cycles Cycles	BS 5490 BS 2543:1995
SOLIDEZ DE LOS COLORES A LA LUZ Colour fastness to light / Résistance à la lumière	5	UNE 40187 BS 1006-B02
SOLIDEZ A LA LIMPIEZA EN SECO Rubbing solvents / Résistance au nettoyage à sec	4-5	ISO 105-D01 UNE 40099
SOLIDEZ DE LOS COLORES AL LAVADO Rubbing fastness in humid state / Résistance au nettoyage	4-5	ISO 105-C06 UNE 40029
RESISTENCIA AL PILLING Pilling resistance / Résistance au pilling	5	ISO/DIS 12945-2
INSTRUCCIONES DE LAVADO Washing instructions / instructions de lavage		

pineda.

COMPOSICIÓN Composition / Composition	55% Algodón Cotton Coton 45% Poliéster Polyester Polyester	
ANCHO Width / Largeur	140 cm - 54 in.	
PESO Weight / Poids	450 gr/m2 - 630 gr/ml	
RESISTENCIA DE LAS COSTURAS Seam strength / Résistance des coutures	Urdimbre Warp Châine 3 mm Trama Weft Trame 2,8 mm	BS 3320:1988 BS 2543:1995
RESISTENCIA A LA ABRASIÓN Abrasion resistance / Résistance à l'abrasion	> 26.000 Ciclos Cycles Cycles	BS 5490 BS 2543:1995
SOLIDEZ DE LOS COLORES A LA LUZ Colour fastness to light / Résistance à la lumière	5	UNE 40187 BS 1006-B02
SOLIDEZ A LA LIMPIEZA EN SECO Rubbing solvents / Résistance au nettoyage à sec	4-5	ISO 105-D01 UNE 40099
SOLIDEZ DE LOS COLORES AL LAVADO Rubbing fastness in humid state / Résistance au nettoyage	4-5	ISO 105-C06 UNE 40029
RESISTENCIA AL PILLING Pilling resistance / Résistance au pilling	5	ISO/DIS 12945-2
INSTRUCCIONES DE LAVADO Washing instructions / instructions de lavage		

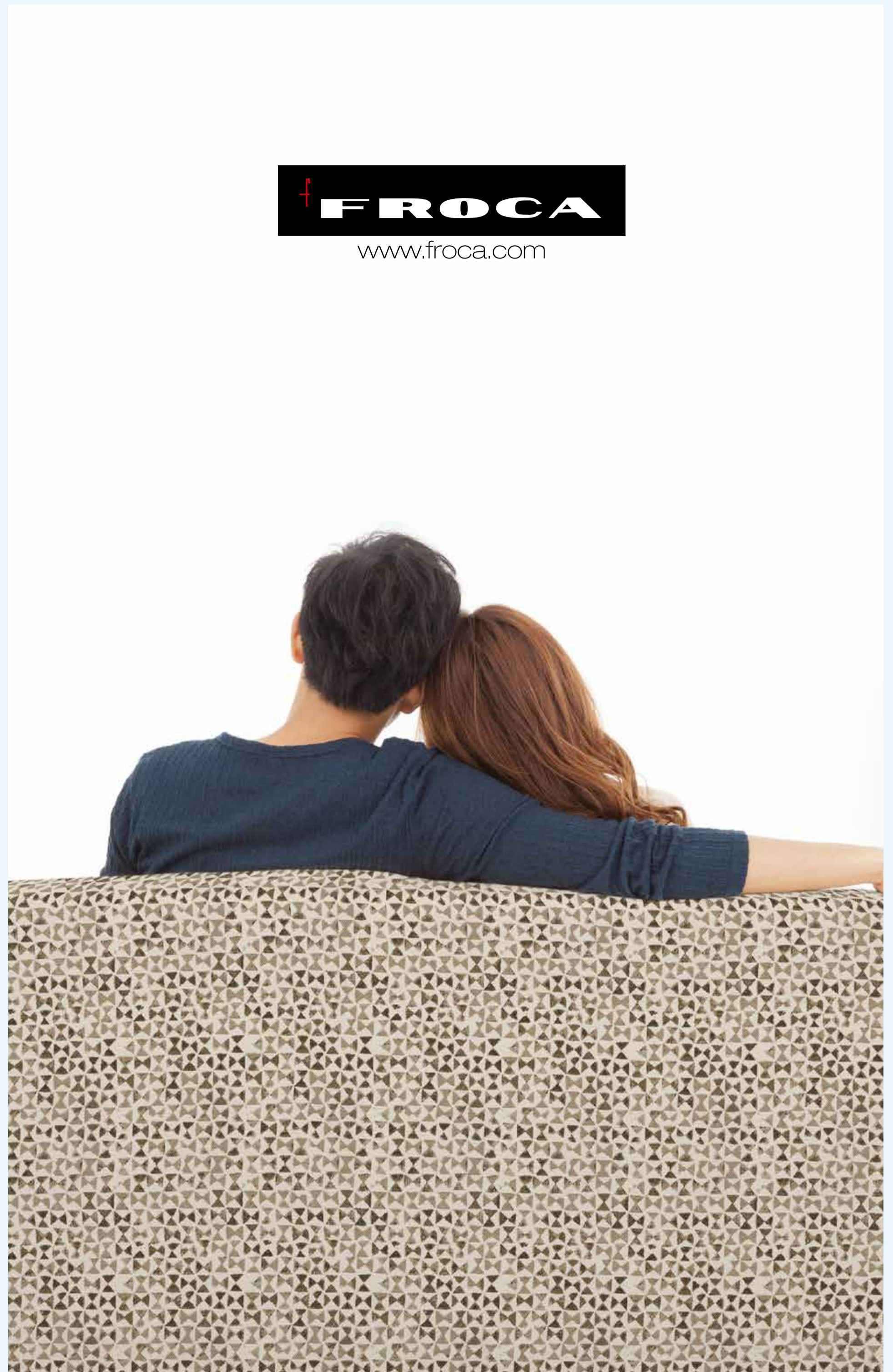


www.froca.com

cuidado de los tejidos.

instrucciones de lavado / washing instructions / instructions de lavage

<p>Lavado a máquina, máximo a 40° C con detergentes neutros. Washing machine, maximum 40°C with neutral detergents. Lavage à un maximum de 40 °C avec un détergent neutre.</p>	<p>Lavado máximo a 30° C con detergentes neutros. Washing machine, maximum 30°C with neutral detergents. Lavage à un maximum de 30 °C avec un détergent neutre.</p>	<p>No usar lejía. Do not use bleach. Ne pas utiliser eau de javel.</p>	<p>Planchar por la cara posterior, máxima 110°. Iron only on the rear side, at a maximum of 110°. Repasser par la face de derrière, 110° au maximum.</p>	<p>Planchar por la cara posterior, máxima 150°. Iron only on the rear side, at a maximum of 150°. Repasser par la face de derrière, 150° au maximum.</p>	<p>Puede utilizarse el lavado en seco. Dry cleaning can also be used. Nettoyage à sec peut être utilisé.</p>	<p>Evitar secar al sol. Avoid drying in the sun. Éviter sécher au soleil.</p>	<p>No secar en secadora. Do not tumble dry. Ne pas sécher en machine.</p>
--	---	--	--	--	--	---	---



www.froca.com

froca**perfect**fabrics

f **FROCA**

www.froca.com